



## CARLO VALSECCHI

Carlo Valsecchi (Brescia, 1965) lives and works in Milan. He has exhibited his photographs in numerous national and international institutions.

His recent solo exhibitions include: *Tamen Simul*, The Open Box, Milan, 2019; *Gasometro Man*, Pinacoteca Nazionale di Bologna, Bologna, 2019; *Developing the future*, Ex Ospedale dei Bastardini, Biennale di Fotografia dell'Industria e del Lavoro, Bologna, 2017; Roberto Coda Zabetta / Carlo Valsecchi, *Case Chiuse #01*, Garage Soccol, Milan, 2015; *Mare Nostrum*, Walter Keller Gallery, Zurich, 2013; *San Luis*, Mart - Museo arte moderna e contemporanea di Trento e Rovereto, Rovereto, 2011.

Among the most important group exhibitions: *Civilization: the way we live now*, MMCA, Seoul, 2018; UCCA, Beijing, e NGV, Melbourne, 2019; *Ceramica, Latte, Macchine e Logistica. Fotografie dell'Emilia-Romagna al lavoro*, MAST GALLERY, Bologna, 2016; *No Man Nature*, Fotografia Europea, Effetto Terra, Palazzo da Mosto, Reggio Emilia, 2015; *Industria Oggi/Industry Now*, MAST GALLERY, Bologna, 2015; Museo della Merda, Castelbosco, Piacenza, 2015; *Landmark: The Fields of Photography*, Somerset House, London, 2013; *Un libro, una mostra*, Galleria Carla Sozzani, Milan, 2013; *Un mondo nuovo*, UniCredit Art Collection, Milan, 2012; *Subverted*, Ivorypress, Madrid, 2012; 54th Biennale di Venezia, Italian Pavilion, invited by Norman Foster, Venezia, 2011.

## ARTWORKS

**Carlo Valsecchi**

**# 0940 Veracruz, Veracruz, MEX. 2010**

**# 01119 Bologna, IT. 2019**

**# 0955 Veracruz, Veracruz, MEX. 2010**

C-Print, dibond on plexiglass

55 x 68 cm

Courtesy of the artist and Case Chiuse by Paola Clerico

### EXPLANATION OF THE WORKS - installed for the exhibition Case Chiuse #08

Carlo Valsecchi's research starts from the encounter of three variables: space, time and light. Variables always present in his work, alternating between the near and the far, between precise figuration and poetic abstraction.

His large-format photographs, devoid of human presence, often take unexpected vantage points, which, while initially destabilizing our perception, then encourage us to engage more actively with the image.

The installation on display, a distillate of his work, is built through three pre-existing niches, deliberately painted in dark gray to bring out the spatial austerities that distinguish their essence. The photographic triptych, through the orthogonal reading, invites us to enter a sort of passage that recalls the lower churches of the Basilica di San Clemente al Laterano, Rome. From there, we access an abstract work with a strong spatial impact - a sort of "spatial container" - to finally move on to a possible exit route, among the infinite possibilities, represented by a reinforced concrete corridor facing the blinding light of Mexico.

**Carlo Valsecchi**

**# 0910 Amburgo, DE. 2012**

3 foto / 3 photos, C-Print, dibond on plexiglass

14 x 17 cm ogni foto / each photo

Courtesy of the artist and Case Chiuse by Paola Clerico

**Case Chiuse HQ**  
via Rosolino Pilo, 14  
20129 Milano



**February 13<sup>TH</sup> — April 18<sup>TH</sup> 2020**

**Opening, February 12<sup>TH</sup> 2020**  
from 6.30 PM to 9 PM

**TAREK ABBAR / A CONSTRUCTED WORLD /  
ROBERTO CODA ZABETTA /  
GABRIELE DE SANTIS / NICK DEVEREUX /  
TAMARA HENDERSON / CARLO VALSECCHI /  
NICO VASCELLARI**

---

**CASE CHIUSE #08**  
by Paola Clerico

---

**[www.casechiuse.net](http://www.casechiuse.net)**  
[info@casechiuse.net](mailto:info@casechiuse.net)

**Opere in mostra / Artworks on show**

per ulteriori informazioni sulle opere, per favore contattare /  
for more information on the works, please contact

Paola Clerico +39 348 7353469 [paola.clerico@gmail.com](mailto:paola.clerico@gmail.com)  
Ginevra D'oria +39 349 7953667 [ginevra.doria@gmail.com](mailto:ginevra.doria@gmail.com)

**[www.casechiuse.net](http://www.casechiuse.net)**



**Carlo Valsecchi**  
**# 0940 Veracruz, Veracruz, MEX. 2010**  
C-Print, dibond on plexiglass  
55 x 68 cm  
Ed.: 1/3 (in questo formato / in this format)  
Courtesy of the artist and Case Chiuse by Paola Clerico







**Carlo Valsecchi**  
**# 01119 Bologna, IT. 2019**  
C-Print, dibond on plexiglass  
55 x 68 cm  
Ed.: 1/3 (in questo formato / in this format)  
Courtesy of the artist and Case Chiuse by Paola Clerico







**Carlo Valsecchi**

**# 0955 Veracruz, Veracruz, MEX. 2010**

C-Print, dibond on plexiglass

55 x 68 cm

Ed.: 1/3 (in questo formato / in this format)

Courtesy of the artist and Case Chiuse by Paola Clerico





**Installation view: Carlo Valsecchi, # 0940 Veracruz, Veracruz, MEX. 2010; # 01119 Bologna, IT. 2019; # 0955 Veracruz, Veracruz, MEX. 2010**





**Carlo Valsecchi**

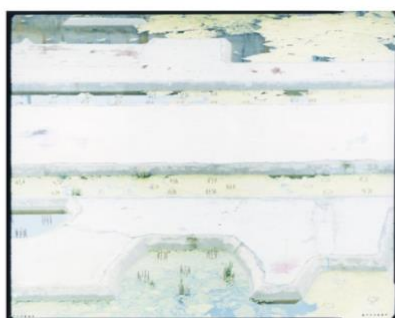
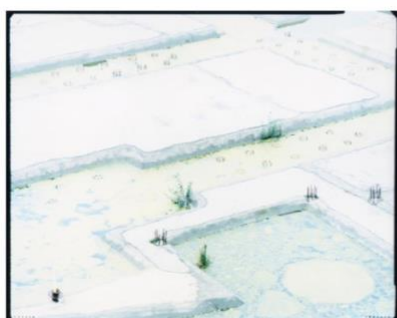
**# 0910 Amburgo, DE. 2012**

3 foto / 3 photos, C-Print, dibond on plexiglass

14 x 17 cm ogni foto / each photo

Ed.: 1/10 (in questo formato / in this format)

Courtesy of the artist and Case Chiuse by Paola Clerico



**Installation view: Case Chiuse #08**

